

TERNA B 45

CALDAIA A LEGNA



The double firebox boiler TERNAS and the double firebox +boiler tube TERNAB, are a logical addition to the heating system. The firebox of the TERNAS model is identical to the one installed in SIRIO for burning solid fuels such as wood, coal, compressed briquettes, etc. A second firebox has been installed next to this one, separated from the smoke side but communicating with the water side, that makes it possible to install a fan assisted gas or diesel oil burner to guarantee heating continuity when the solid fuel fire goes out.

Heatable area

414 m².





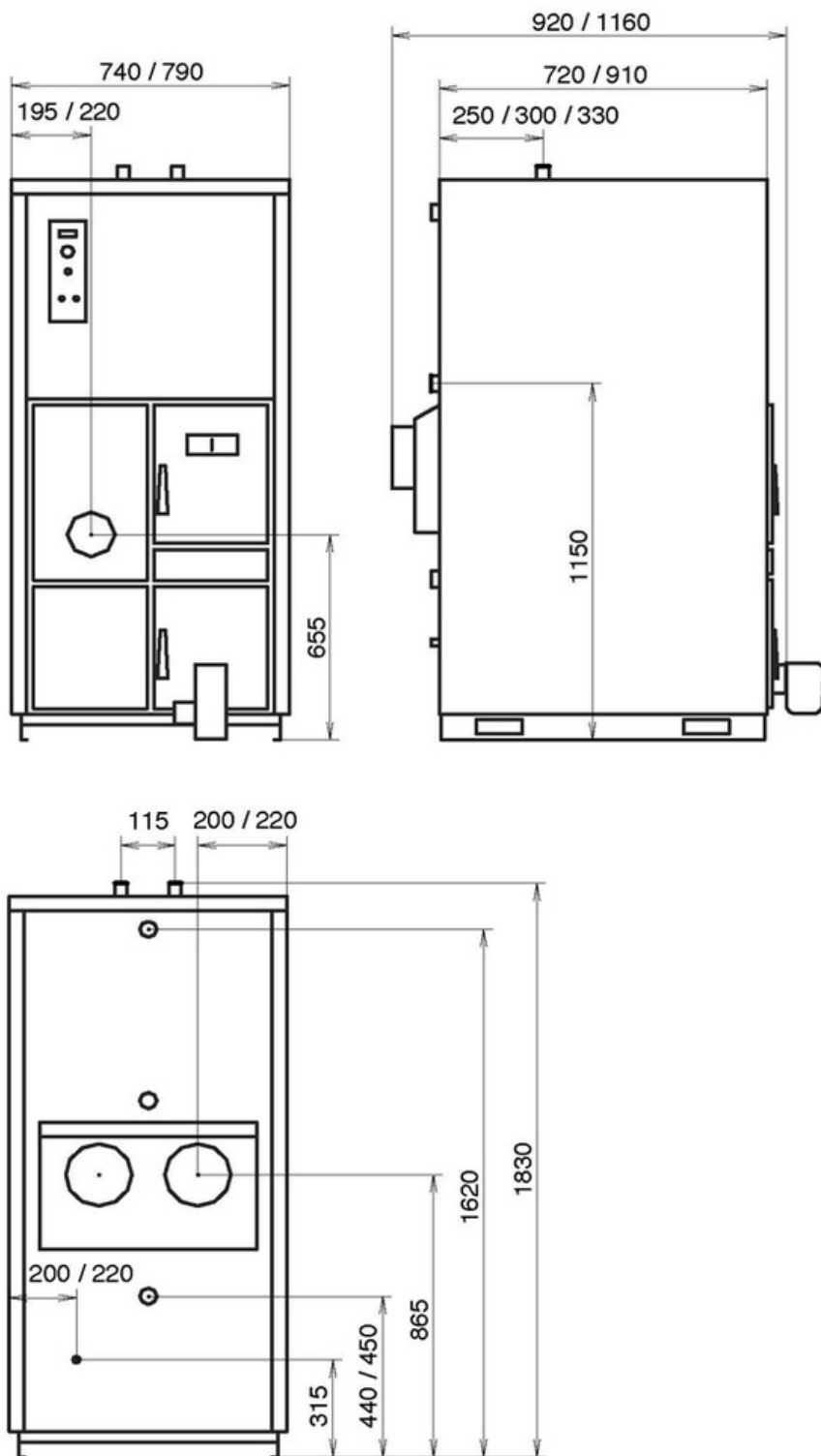
- 1 - Electromechanical control panel
- 2 - Integrated domestic Hot Water storage (DHW)
- 3 - Pipes heat exchanger with Thermocore system
- 4 - Riddle grate lever
- 5 - Gas or Oil firebox
- 6 - Gas or Oil burner (not included)
- 7 - Cast iron grate with riddle system
- 8 - Double separated smoke outlets (only TERNA S and TERNA B)



OPTIONAL ACCESSORIES



DIMENSIONS



TECHNICAL DATA

DIMENSIONS (HXWXD)	1830X740X1160
WEIGHT (KG)	534
HEATABLE AREA (M ²)*A*C	414
EFFICIENCY UP TO MAX (%)*A	79,3%
ENERGY CLASS	A
POWER TO THE HEART (KW)*A	58,0
RATED POWER (KW)*A	46,0

POWER TO THE WATER (KW)*A	46
RADIATION (KW)*A	-
HOURLY PELLET CONSUMPTION (KG/H)*A	-
WOOD HOURLY CONSUMPTION (KG/H)*A	0 - 13,8
PELLET HOPPER CAPACITY (KG)*A	
WARM AIR DUCTING	-
MAXIMUM SINGLE DUCTING OUTLET (M)	-
PATENTED BURNER PELLETPOWER®	
ROOM VENTILATION	-
PRIMARY AIR FROM OUTSIDE	-
CO EMISSIONS (MG/M³; 13% OF O2)*A	
CO EMISSIONS (MG/M³; 10% OF O2)*A	-
DUST EMISSIONS (MG/M³; 13% OF O2)*A	
DUST EMISSIONS (MG/M³; 10% OF O2)*A	-
SILENCE (DB)	-
REMOTE CONTROL	-
RADIO CONTROL WITH ROOM TEMPERATURE THERMOSTAT	-
WEEKLY PROGRAMMER (3 DAILY LIGHTING)	-
«SMART INFO» FUNCTION	-
SYSTEM CIRCULATING PUMP	-
EXPANSION TANK	-
OVER PRESSURE VALVE	-
FLUE GASEXHAUST DIAMETER (MM)	200/200
MIN. FLUE DRAUGHT PRESSURE (PA)	25
ELECTRIC CONSUMPTION (WATT)	-
HIGH TEMPERATURE SAFETY THERMOSTAT	-

*A EMISSIONS AND PERFORMANCE DATA MAY CHANGE ACCORDING TO THE FUEL USED. THE VALUES OF PELLET PRODUCTS HAVE BEEN OBTAINED BY USING CERTIFIED FUEL ACCORDING TO EN 14961-2 A1-A2 NORM. WOOD LOGS PRODUCTS VALUES MAY VARY ACCORDING TO THE TYPE AND QUALITY OF THE WOOD LOGS USED.

*B PROVISIONAL DATA UNDER CERTIFICATION

*C IMPORTANT: WHEN CALCULATING THE VOLUME OF THE "HEATED AREA" SOME RELEVANT ASPECTS MUST BE CONSIDERED: INSULATION OF THE BUILDING (ENERGY CLASS), POSITION OF THE HEATER, CLIMATIC AREA AND MORE ASPECTS THAT CAN AFFECT THE VALUES OF PERFORMANCE. REPORTED DATA HAVE BEEN CALCULATED ON THE BASE OF ROOF NOT HIGHER THAN 3 MTS.

THE MANUFACTURER RESERVES THE RIGHT TO MAKE CHANGES WITHOUT PREVIOUS NOTICE.

THERMOROSSI S.p.A.

Via Grumolo, 4 | 36011 Arsiero (VI) | Italy | E-mail: info@thermorossi.it

Tel: 800.44.88.77 | Fax: 0445 741657 | P.IVA 00168470243 | Iscr. REA99797 Vicenza | Cap. Sociale di 156,000,00 I.v.